

# RUNNING CM/ECF WITH JAVA™ WEB START AT THE US COURT OF APPEALS FOR VETERANS CLAIMS

## Background

Historically, the CM/ECF application has been run as a Java Applet as part of the web browser on your system. However, most browsers either no longer support running Java Applets or do so only in a limited way. As of the publication of this document, current versions of Google Chrome, Mozilla Firefox and Microsoft Edge will not run Java Applets, and only some versions of Microsoft Internet Explorer do so consistently.

To work around these limitations, CM/ECF was modified to take advantage of a feature of Java called Web Start, which is a component of the Java software already installed on your system if you are a CM/ECF user. Essentially, it allows the CM/ECF application to be run outside of a web browser's environment, directly by the Java software on your computer.

You will still access CM/ECF by navigating to <http://efiling.uscourts.cavc.gov> and following the appropriate link there to log in, but the process after that will be slightly different if using Web Start.

This document describes the necessary steps you will need to perform first to ensure your Windows computer can use Java Web Start for CM/ECF at the US Court of Appeals for Veterans Claims.

## Configuring Windows 10 for Java Web Start

### Download and install the latest Java

It is recommended that you both install the latest version of Java and remove all older versions from your system. To do so, open your web browser (Internet Explorer, Firefox, etc.) and open the following link to Oracle's Java update & removal tool and follow the instructions there:

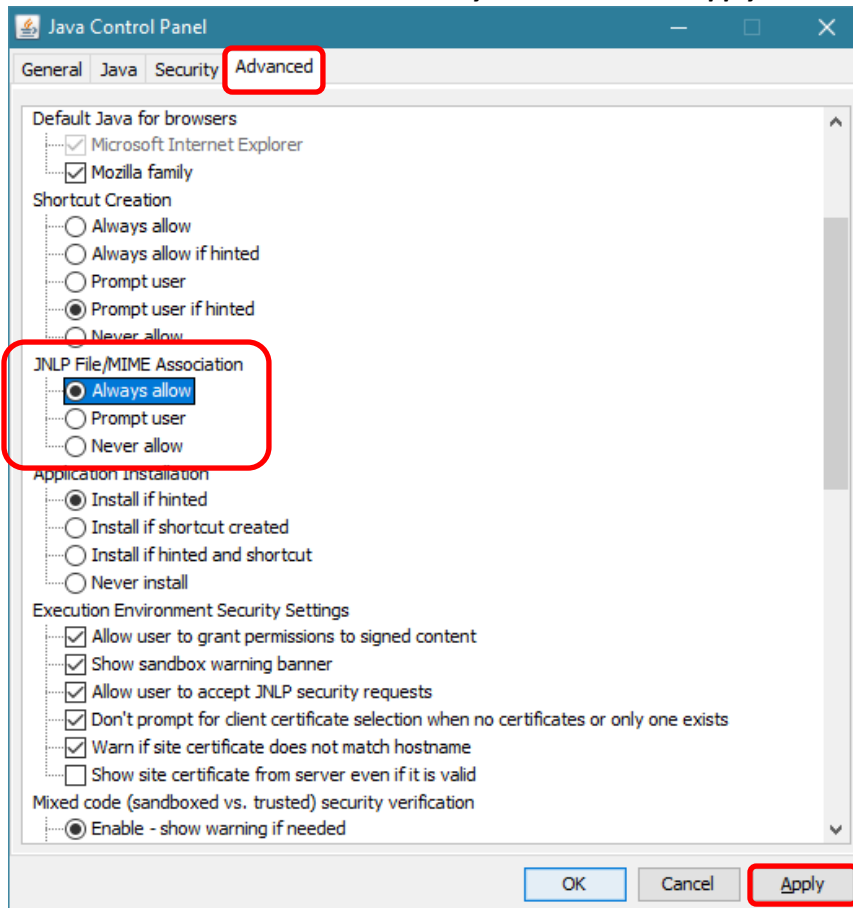
<https://www.java.com/en/download/uninstallapplet.jsp>



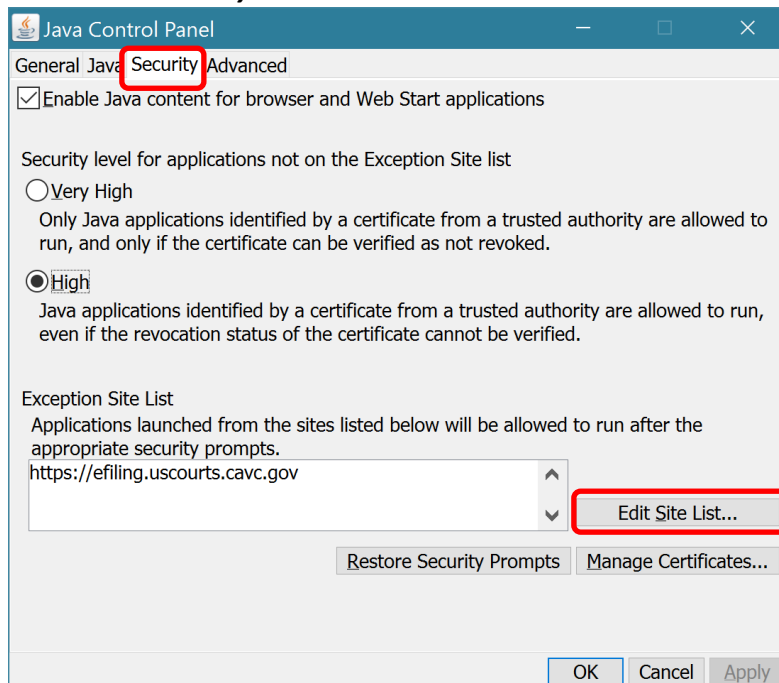
If you are certain that you must retain older versions of Java you may install the newest version by navigating to <https://www.java.com/en/download/win10.jsp> and installing it, without removing the older version, however this situation may have unpredictable results, and the US Court of Appeals for Veterans Claims cannot assist in troubleshooting such a situation.

Configure Java to recognize and permit JNLP files to run and add the Court's site to the exception list

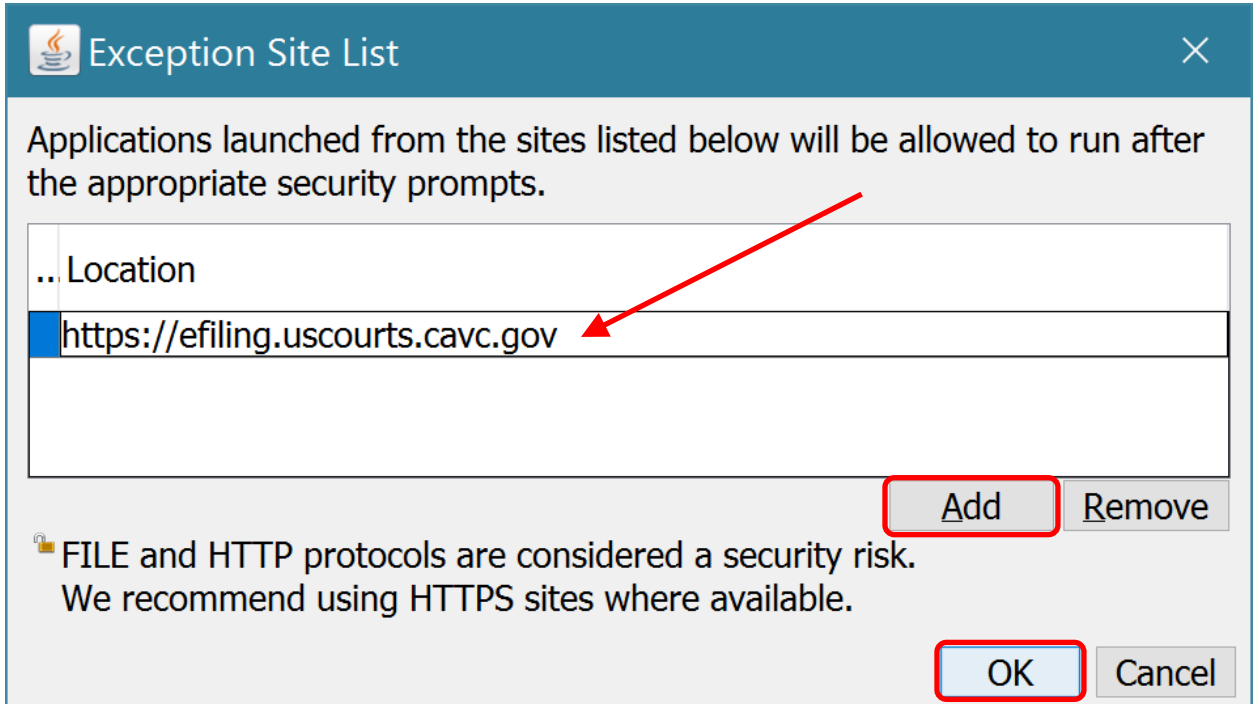
1. Click on the **Start** button and search for “java”. Click on **Configure Java**.
2. Click on the **Advanced** tab, and then scroll down until you see the title **JNLP File/MIME Association**. Check the button for **Always Allow** and click **Apply**.



3. Click on the **Security** tab and **Edit Site List** to add the Court's site to the java exception list.



4. Click **Add**.
5. Type "<https://efiling.uscourts.cavc.gov>" in the space next to the red ! and click **OK** and **OK**.  
Make sure the spelling is exact.



## Logging in

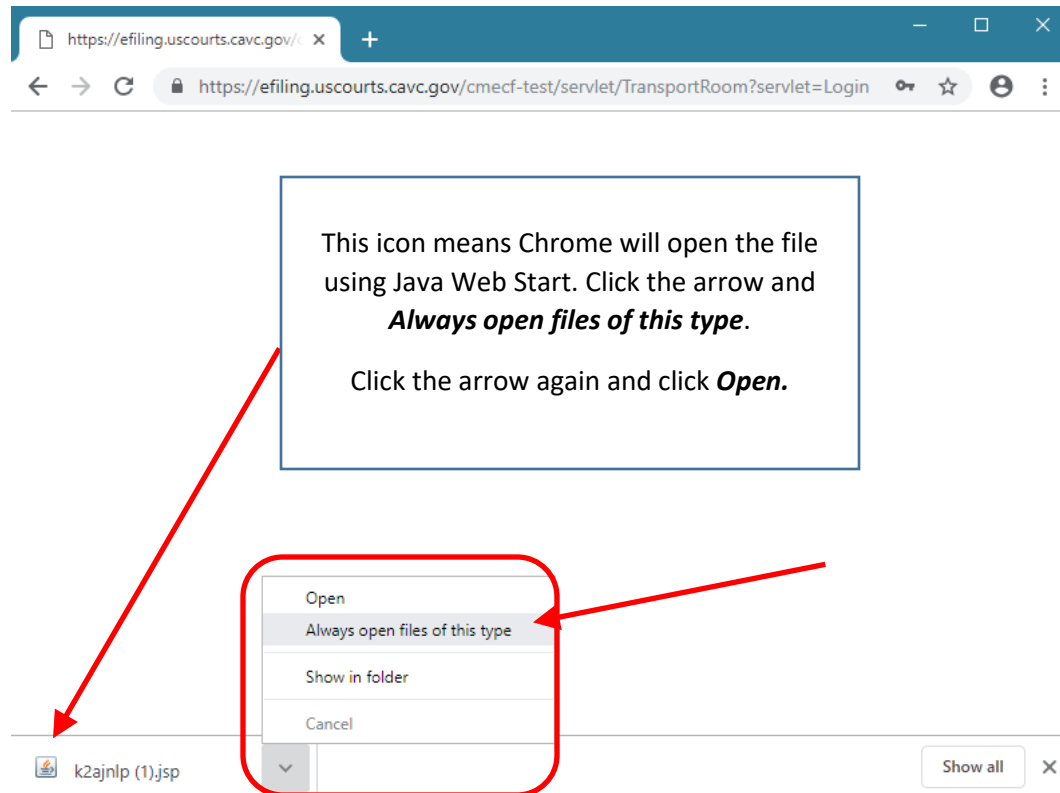
There is a different URL to log in to CM/ECF if you are using Java Web Start.

<https://efiling.uscourts.cavc.gov/cmecf/servlet/TransportRoom?servlet=Login?client=pc>

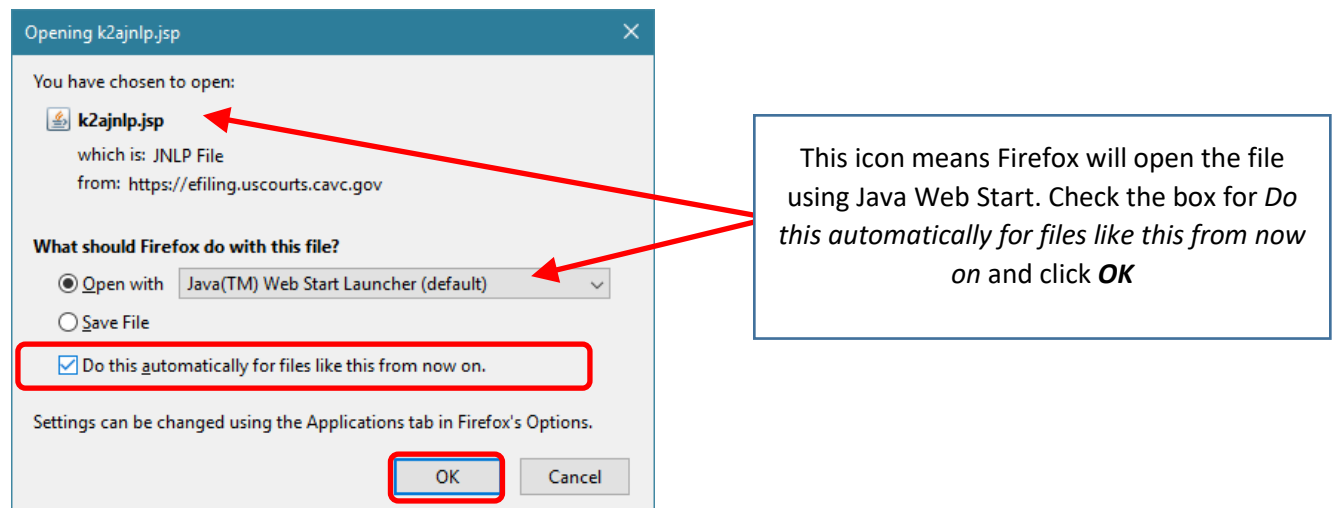
The first time CM/ECF is run with Java Web Start, you may have to perform additional steps to ensure the browser is properly configured to allow Java Web Start and the CM/ECF application to run properly. See the images below. If your browser is using Java Web Start to open the k2ajnlp file, click the option to do this automatically.

Examples:

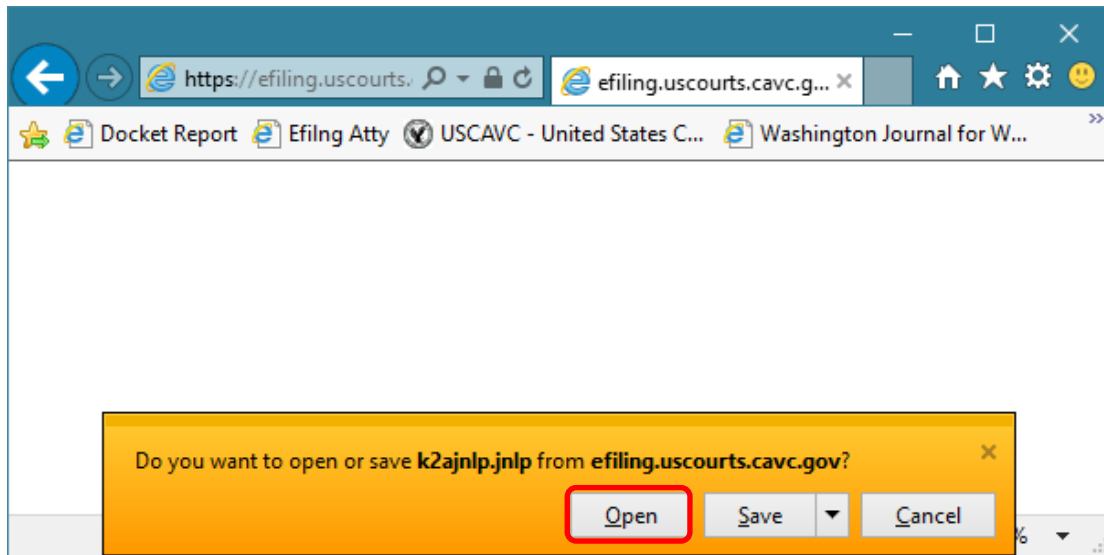
### Google Chrome



### Mozilla Firefox

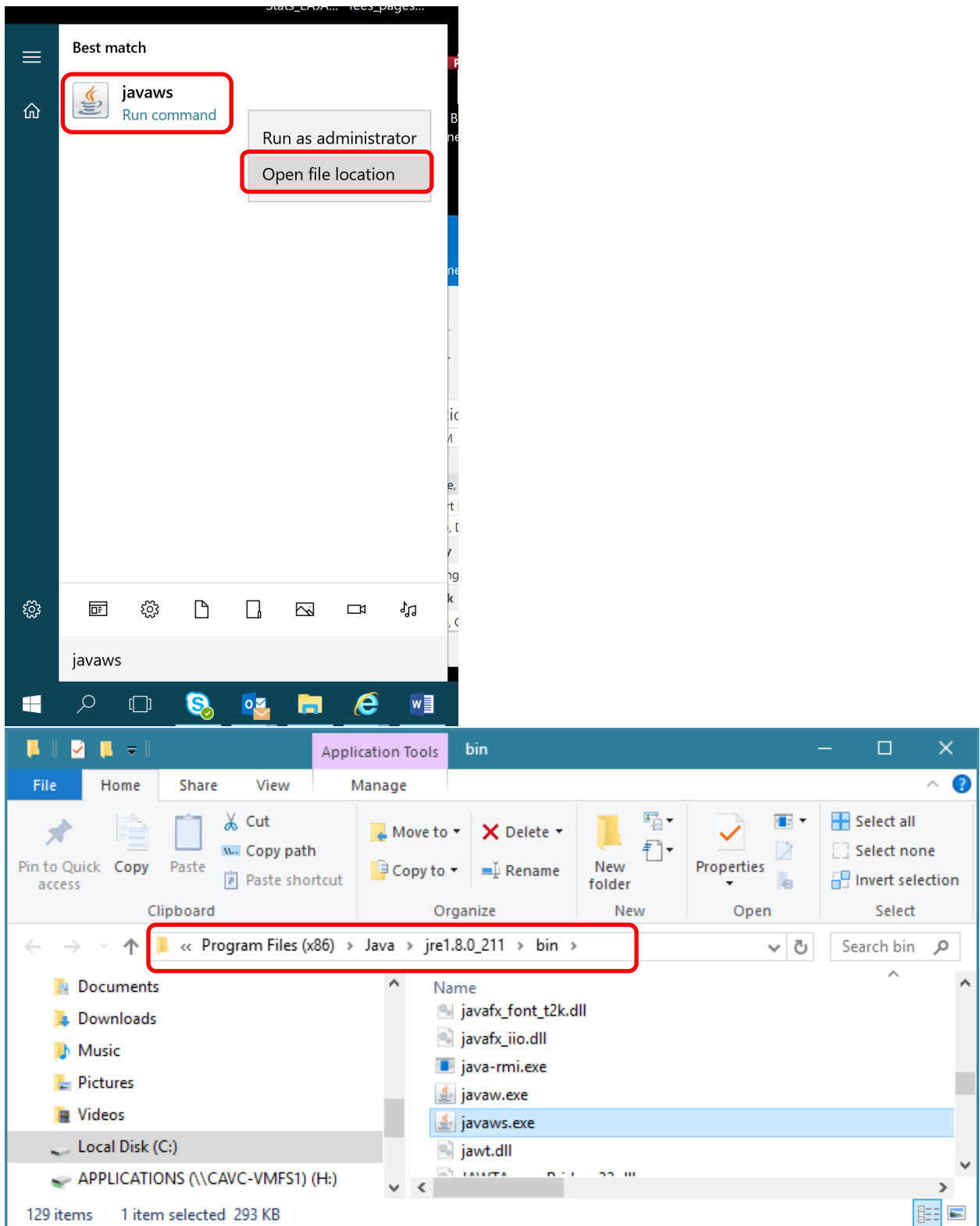


### Internet Explorer

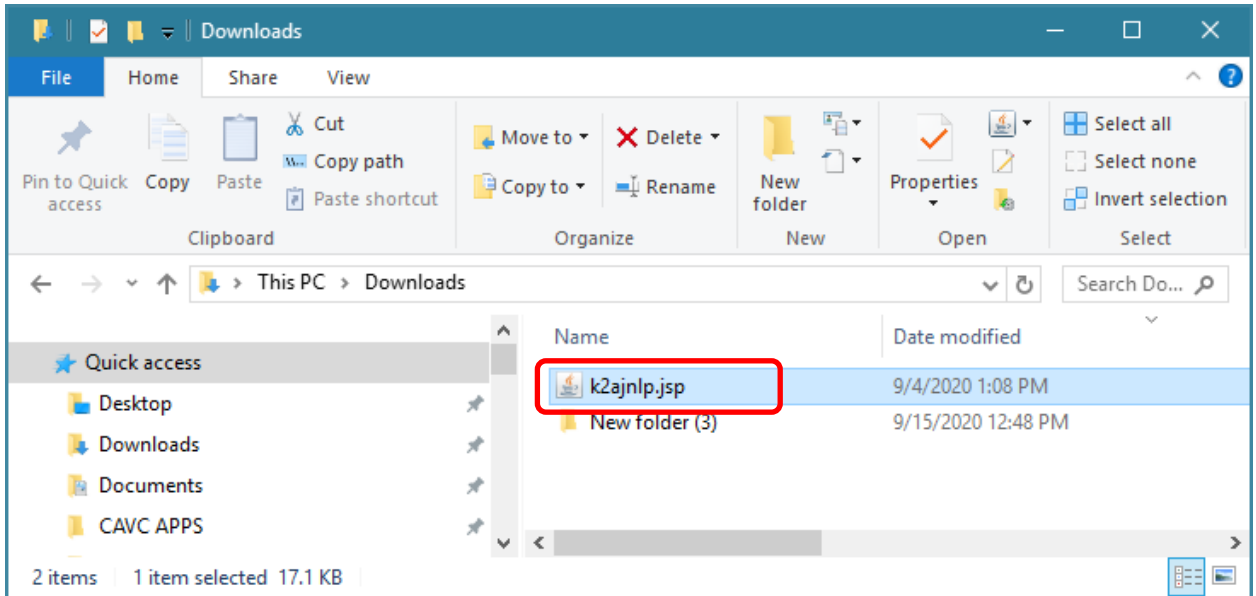


## Ensure that Java Web Start will open JSP files

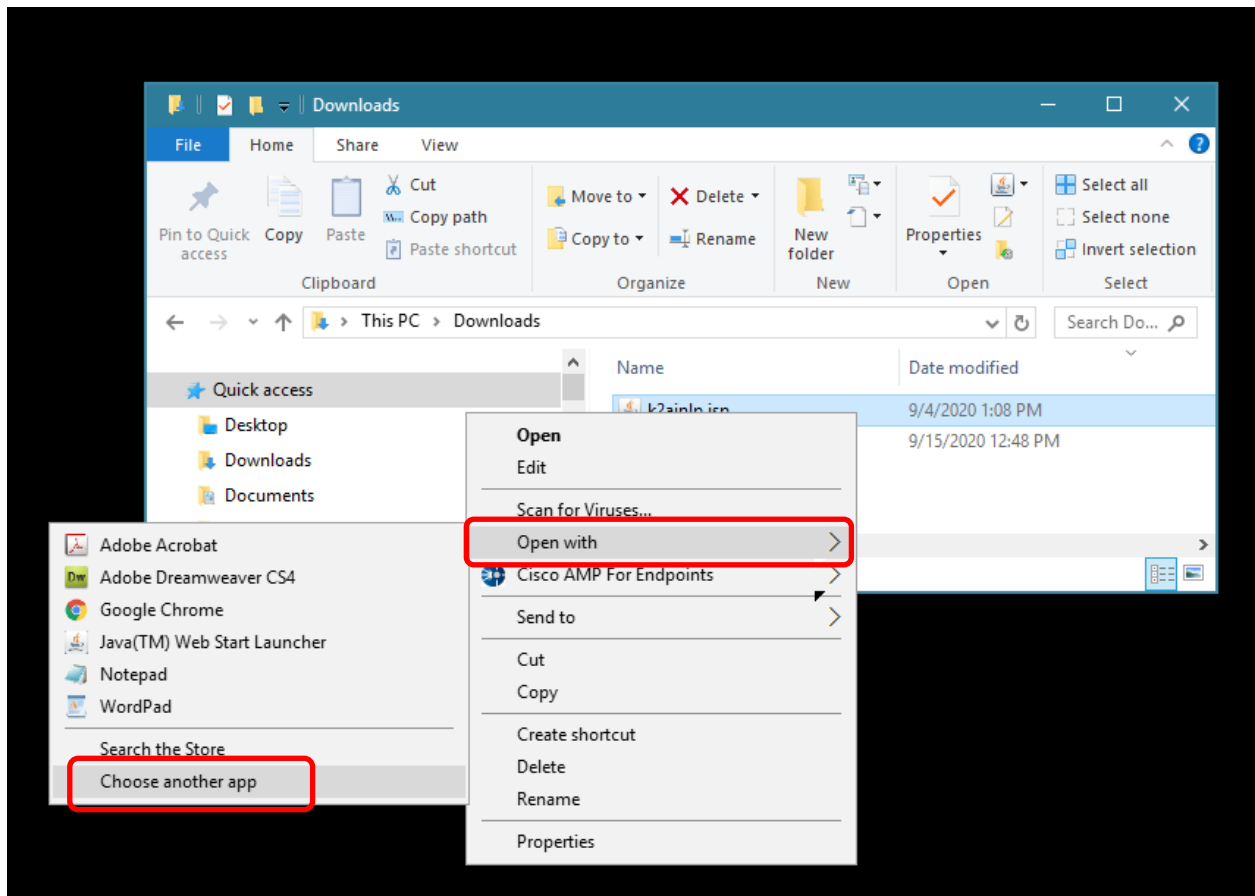
1. Find the location of the javaws program. Click the **Windows** button and type "javaws". **Right click** on javaws and click **Open file location**. An explorer window will open with the location of the program.



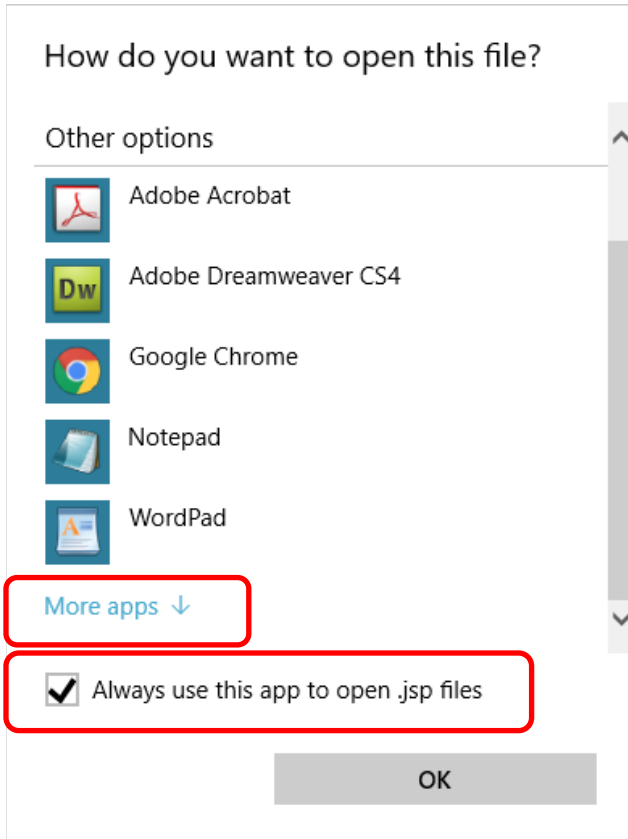
2. After logging in to CM/ECF, a file called k2ajnlp.jsp file will be downloaded. By default, it should be saved in the Downloads folder. Open the Downloads folder.



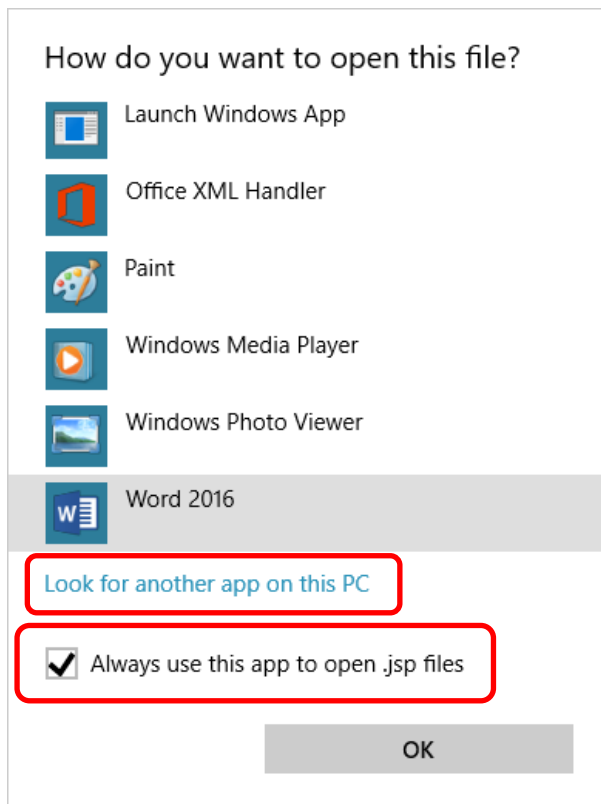
3. **Right click** on k2ajnlp.jsp and click **Open with**. Select **Java Web Start Launcher**. If you don't see it, click **Choose another app**.



4. Check the box for **Always use this app to open .jsp files**. Scroll down and look **for Java Web Start Launcher**. If you don't see it, click **More apps**.

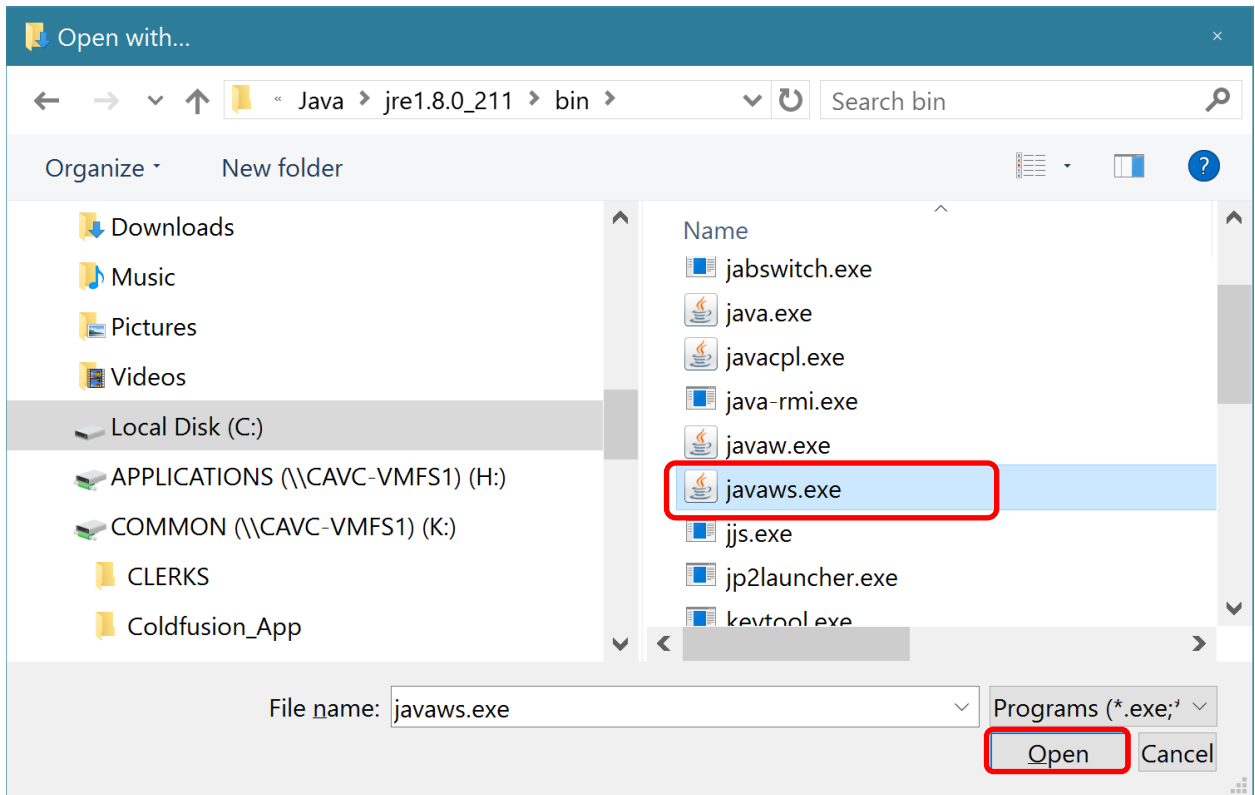


5. Scroll down and look **for Java Web Start Launcher**. If you don't see it, click **Look for another app on this PC**.

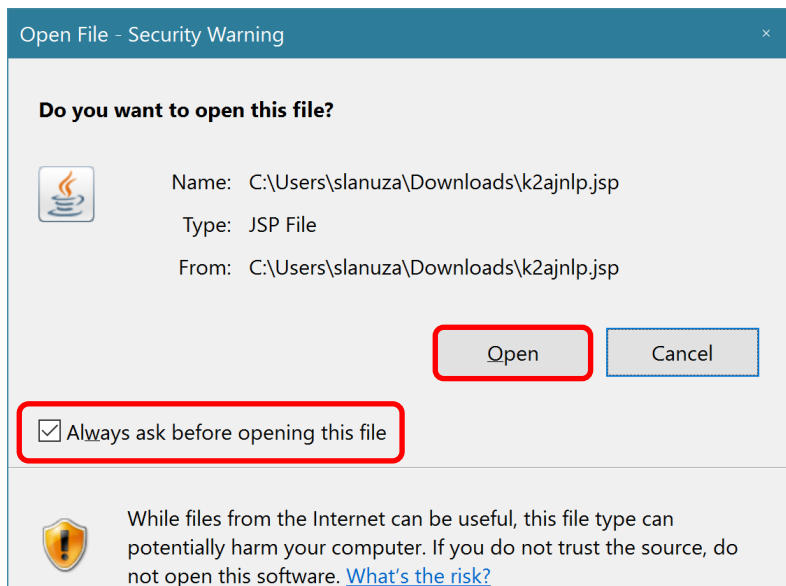




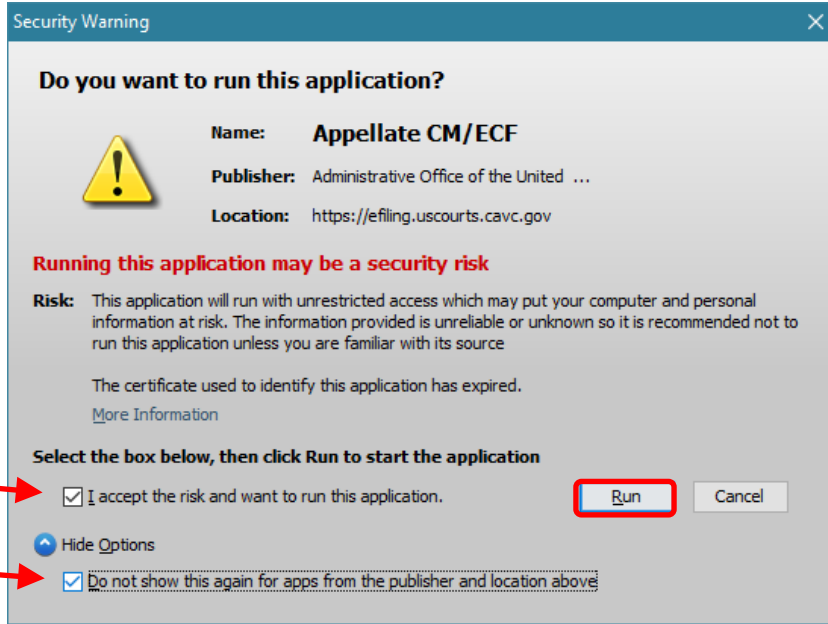
6. Click the appropriate folders to get to the javaws.exe program. See the path from step 1. Select ***javaws.exe*** and click ***Open***.



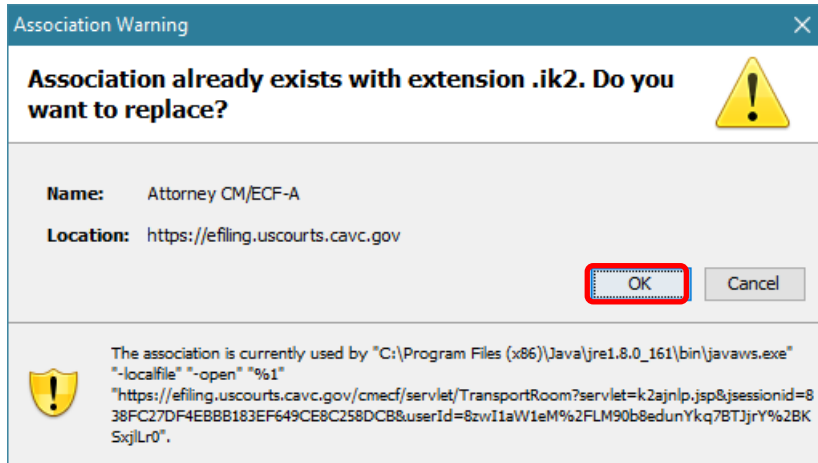
7. Uncheck the box for ***Always ask before opening this file***. Click ***Open*** in this window.



8. Once CM/ECF is running, you will see this window. Click the boxes for *I accept the risk* and *Do not show this again* and **Run**.



9. If you see this window, click **OK**.

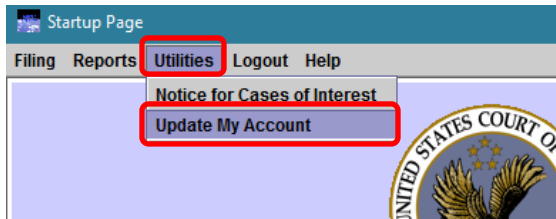


10. After logging in, **keep these 3 windows open** while working in CM/ECF. You may minimize the windows, but do not close them.

The image shows three overlapping windows from a computer screen. The top window is titled "Attorney CM/ECF..." and contains a large blue "CM/ECF" logo. Below the logo is a red warning icon and the text "Closing this window terminates CM/ECF." The middle window is titled "Startup Page" and has a menu bar with "Filing", "Reports", "Utilities", "Logout", and "Help". The main content area features the seal of the United States Court of Appeals for Veterans Claims, followed by the text "U.S. Court of Appeals CM/ECF Official Attorney Electronic Document Filing System". Below this is a disclaimer: "This facility is for Official Court Business only. Activity to and from this site is logged. Document filings on this system are subject to Federal Rule of Appellate Procedure, Rule 25. Evidence of unauthorized or criminal activity will be forwarded to the appropriate law enforcement officials under 18USC152 and 3571." A "Welcome" section follows, stating "Welcome to the U.S. Court of Appeals Case Management/Electronic Case Files System. Please select an option from the menu." and "Last login Mar 18, 2019 9:26:26 AM EDT". A link for "Court Information" is also present. The bottom window is a web browser with the address bar showing "efiling.uscourts.cavc.gov/cmecf". The browser's address bar, search bar, and navigation buttons are visible.

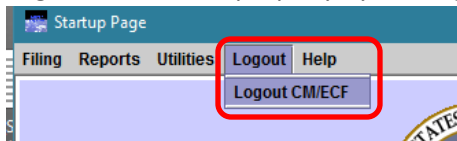
## Changing Password

To change the password, click on Utilities – Update My Account. The password must be at least 8 characters and contain at least 2 non-alpha characters.



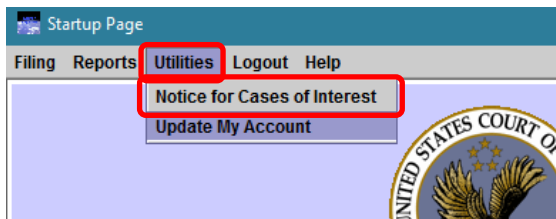
## Logging out

Log out of CM/ECF properly by clicking Logout – Logout CM/ECF.

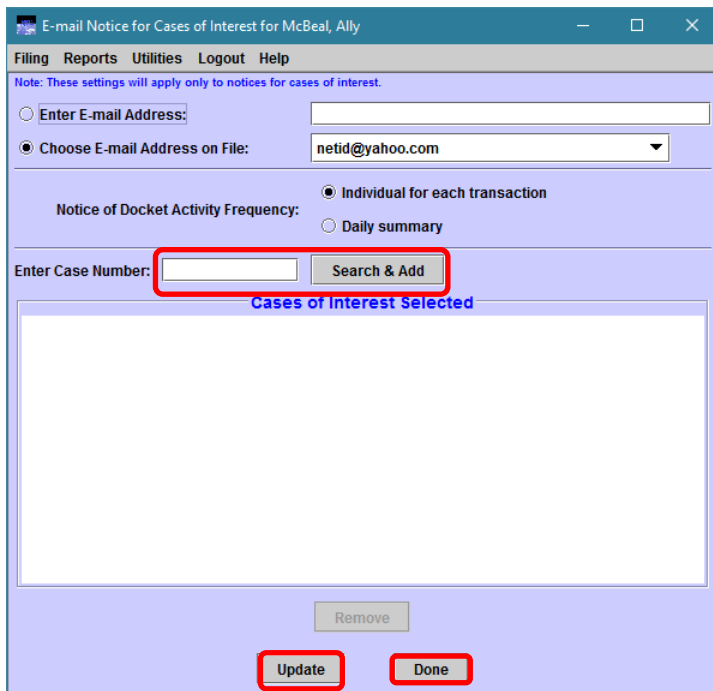


## Receive notices for cases of interest

To receive notices for cases that you want to follow but are not involved with, click Utilities – Notices for Cases of Interest.



Enter the case number and click **Search & Add**. Then click **Update** or **Done**.

A screenshot of the 'E-mail Notice for Cases of Interest for McBeal, Ally' form. The form includes a note: 'Note: These settings will apply only to notices for cases of interest.' It has two radio buttons for 'Enter E-mail Address:' and 'Choose E-mail Address on File:'. The 'Choose E-mail Address on File:' option is selected, with 'netid@yahoo.com' in the dropdown. Below this is the 'Notice of Docket Activity Frequency:' section with radio buttons for 'Individual for each transaction' (selected) and 'Daily summary'. At the bottom, there is an 'Enter Case Number:' field, a 'Search & Add' button, and a large empty box labeled 'Cases of Interest Selected'. At the very bottom are 'Remove', 'Update', and 'Done' buttons. The 'Search & Add', 'Update', and 'Done' buttons are highlighted with red boxes.